

# Superfast Essex Parish Engagement Event

Wednesday 9<sup>th</sup> December 2015



# Agenda



## 1. Welcome

*Essex County Councillor Kevin Bentley, Deputy Leader and Cabinet Member for Economic Growth, Waste and Recycling*

## 2. Superfast Essex Programme Update

- a. BT fibre rollout – Phase 1 (BT)
- b. Rural Challenge Project update (Gigaclear)
- c. Satellite Subsidy Scheme (ECC)
- d. Community Wi-Fi Scheme (ECC)
- e. Next steps - Phase 2a BT rollout & Final 5% (ECC)

## 3. Satellite – An introduction

*Mark Wynn, Managing Director, Avonline plc*

## 2. Break

## 3. Q&A with the Superfast Essex Programme Team

# Superfast Essex Programme Update: BT fibre rollout - Phase 1

Giles Ellerton – Regional Partnership Director for  
East of England, BT

# At a national level, how far have we come?



**Four out of five**

people in the UK can access superfast broadband (more than 23million via BT's network)

This year, the internet will contribute more than

**£180bn to the UK economy**

This is the largest digital economy in the G20

**38m people**

go online daily in the UK; we spend an average of

**89 hours** online each month

**BT has committed**

to work with UK Government, local government and devolved administrations to get to

**95% of the UK**

Going further needs more

**and different** partnership approaches...

# The Local Broadband picture



- Over 400 fibre cabinets to be built in Essex
- 434km Fibre Spine Cable and 165km Blown Fibre Tubing to be laid (Chelmsford to Edinburgh)
- Over 78,000 Premises will receive improved broadband speed
- 87% coverage at end of Contract 1 2016
- 94% coverage by end of Contract 2 (SEP)

# Achievements



- 326 cabinets stood, of which 276 cabinets live
- Fibre access to 58,700 premises in Essex
- 86% superfast coverage to date (Think Broadband)
- Aim to complete within budget and 3 months ahead of schedule.
- Aim to exceed premises passed by more than 10%
- Accelerated deployment for Contract 2
- Take up exceeded expectations; Gain share funds brought forward to model wider to coverage

# Deployment Solutions



- Fibre to the Cabinet (FTTC)
- Copper Interception (Exchange Only)
- Fibre to the Premise (FTTP)
- Copper Rearrangement
- All In One Cabinet (Denham)
- Internal DSLAM (Lakeside Shopping Centre)
- Overhead Spine Cables (Remote areas)
- Wireless Backhaul (location in survey)
- Conductive Concrete





# Working in partnership with local communities

## 20,000 premises contracted across 100 communities



Ashley, Northamptonshire



Manor Royal, West Sussex



Abbotswood, Hampshire



Fell-End, Cumbria



Preston, Hertfordshire



Little Wenlock, Shropshire



Islip, Oxfordshire



Claverton, Somerset



Rotherwick, Hampshire



# Community partnership approach



## Potential beneficiaries

- Residents groups, parishes, developers, landlords, Business Improvement Districts (BIDs) or other interest groups

## Process

- “Community” approaches BT
- Openreach confirms the area of interest is outside existing programmes and plans
- Openreach provides a quote for delivery
- Community funds 50% of its contribution at contract signature,
- 50% upon completion

## Partnership approach

- Openreach invests to maximum commercial level
- Community funds difference between commercial and actual cost
- Once delivered, Openreach takes responsibility for operating costs and future upgrades



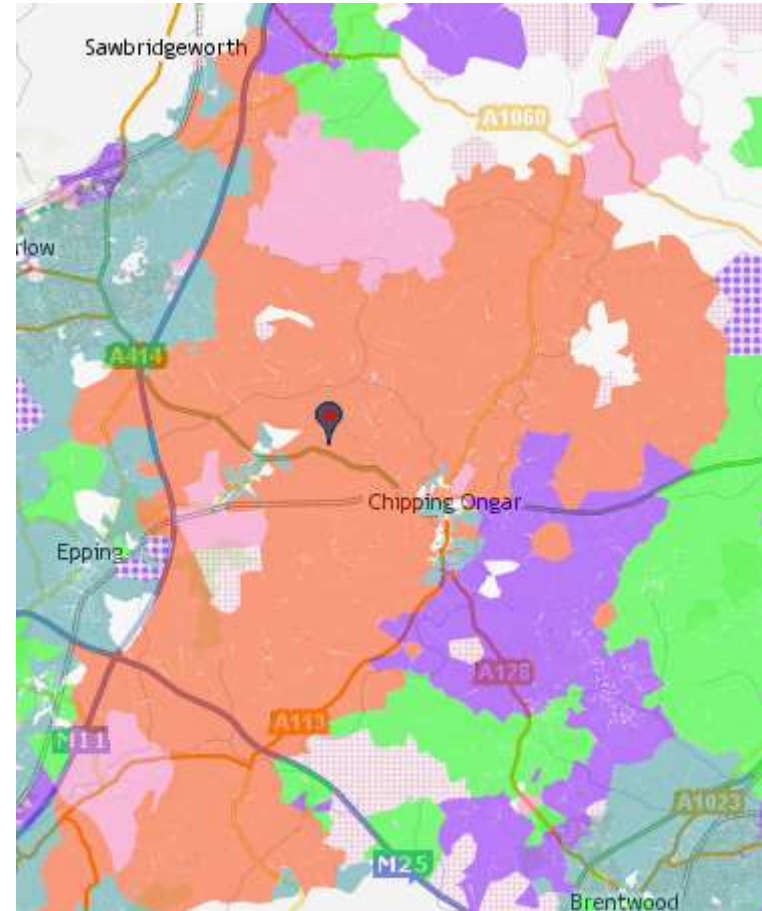
# Superfast Essex Programme Update: Rural Challenge Project

Tony Heath – Project Manager, Gigaclear

# Rural Challenge Project



- Exploring suppliers other than BT and technologies other than FTTC
- Contract awarded to Gigaclear plc end June 2015 - Implementing ultrafast FTTP technology (speeds up to 1000Mbps) to 4,500 homes and businesses in Epping Forest District
- Significant public investment (£2m) and large supplier investment (£5.5m)
- Work underway – first connections live in next few weeks
- ‘Pilot’ could be used in other parts of the county
- Residents and businesses in adjacent areas can register interest with Gigaclear for commercial build at [www.gigaclear.com](http://www.gigaclear.com)
- Options for expansion of the Gigaclear contract with Superfast Essex to be considered towards the end of 2016



[www.superfastessex.org/ruralchallenge](http://www.superfastessex.org/ruralchallenge)

# Superfast Essex Programme Update: Satellite Subsidy Scheme

Karla Schon – Superfast Essex Business  
Communications Officer, Essex County Council

# Satellite Subsidy Scheme



## Overview:

- An interim solution to help those currently unable to receive a broadband download speed of 2Mbps or above

## Eligibility:

- Homes and businesses currently getting less than 2Mbps download speed
- Those not currently not due to receive a fibre upgrade within six months from the date of their application

## What it provides:

- Support towards cost of satellite equipment/installation so that a basic broadband service can be purchased for a first year cost of no more than £400

## When and where:

- Subsidy Scheme available from December 2015 until the end of 2017
- Dedicated web page: [www.superfastessex.org/satellite](http://www.superfastessex.org/satellite)

# Satellite Subsidy Scheme



**Application Process:** [www.superfastessex.org/satellite](http://www.superfastessex.org/satellite)

1. Check that you are eligible to apply (see above)
2. **➤ Apply for a Subsidy Code online**
3. We will check your eligibility (please allow up to 1 month)
4. We will send you a unique Subsidy Code
5. Contact one of the participating satellite broadband service providers to arrange installation



**SUPERFAST  
BRITAIN**



# Superfast Essex Programme Update: Community Wi-Fi Scheme

Lucy Dickinson – Superfast Essex Senior  
Communications Officer, Essex County Council



# Community Wi-Fi Scheme



## Objective:

1. Help communities to take advantage of fast broadband connectivity
2. Drive take-up of the new infrastructure created by Superfast Essex

## Vision:

- Enable local communities to provide free public internet access at a key location
- Easy sign-up process, no technical skill needed, supplier can manage connection, maintenance and account administration
- Superfast Essex to be enabler – local community to fund
- At least 50 communities to take part

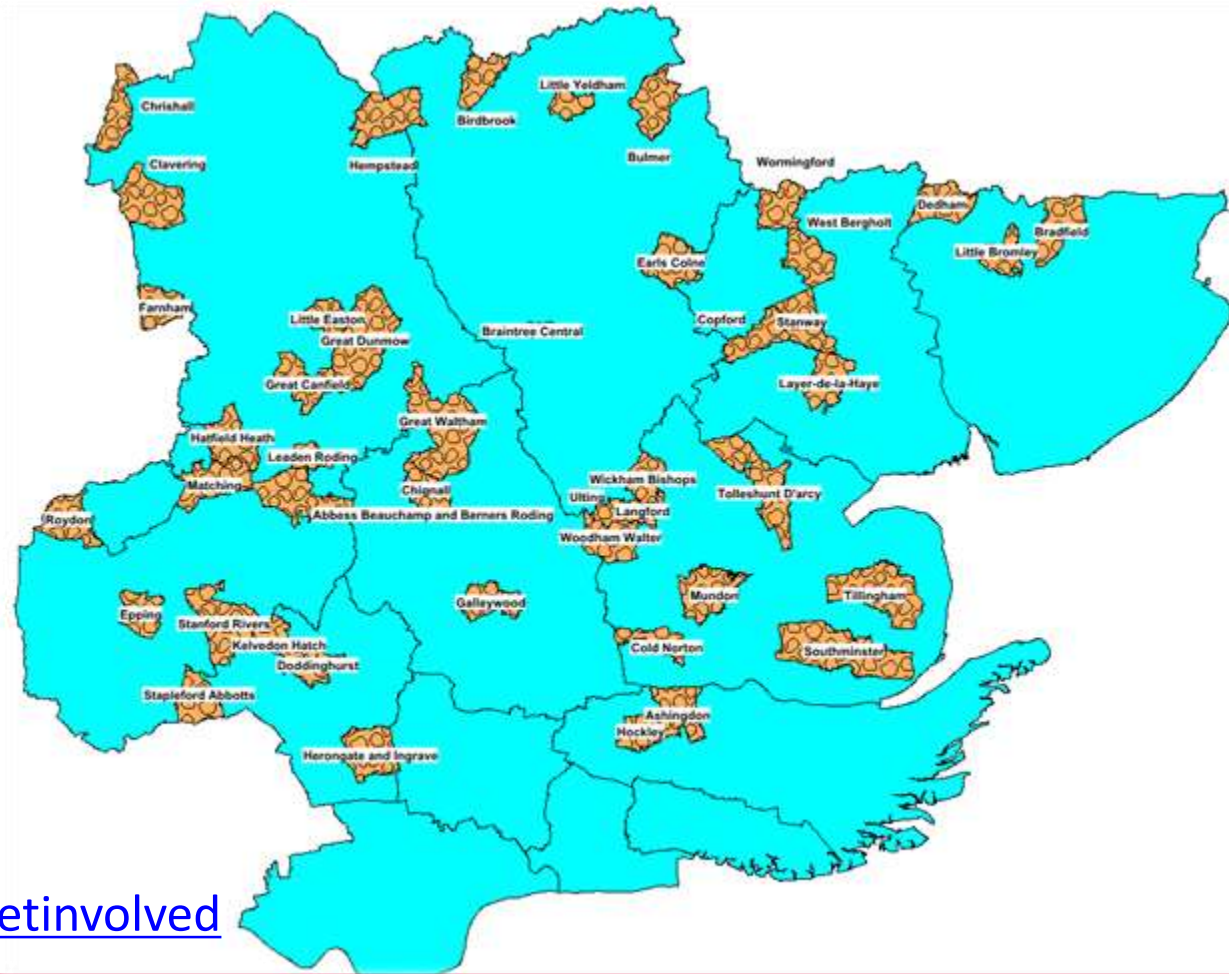
## Next steps:

- Finalising the requirement, planning procurement of a supplier in Jan/Feb 2016
- Service to be offered as a framework underwritten by Superfast Essex/ECC
- Scheme to be announced in March 2016
- Exploring options to help with funding to help cover set up cost, e.g. CIF

# Broadband Champions



- 54 Broadband Champions recruited so far
- 280+ Parishes, Towns, & Villages to update
- 120,000 homes and businesses to be enabled
- 3 projects over 4 years
- A big job for 1 small team...which is why we need your help
- Visit [www.superfastessex.org/getinvolved](http://www.superfastessex.org/getinvolved)



# Superfast Essex Programme Update: Next steps

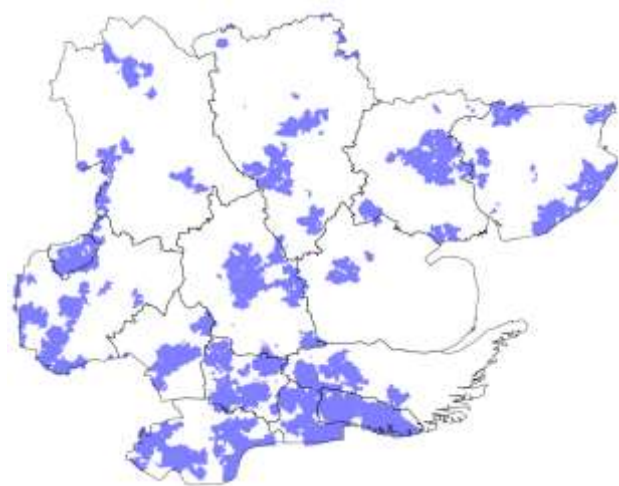
Connie Kerbst – Superfast Essex Senior Programme  
Manager, Essex County Council

# What next – Getting to 95%

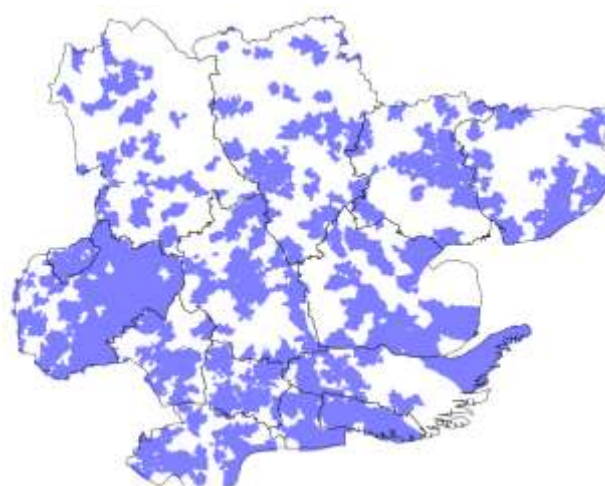


## Further BT rollout - Phase2a:

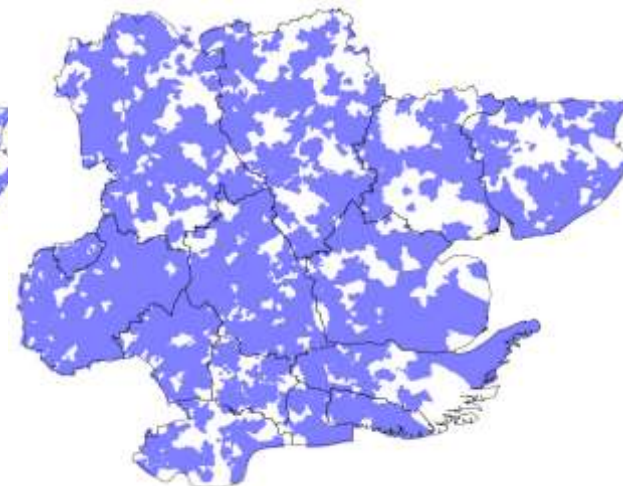
1. Contract let to BT in March
2. Deployment plan accelerated to complete 9 months earlier than originally proposed
3. Seeking to bring deployment start forward further, continue on from Phase 1
4. Areas planned and high-level timescales set , now working on delivery plan



2013 –  
Commercial deployment only



2016 –  
After current work is completed  
(Superfast Essex Phase 1 and 2b)



2019 –  
After further planned work  
(Superfast Essex Phase 2a)

# What next - Connecting the 'Last 5%'

- **Establish a clear view** of the areas still to cover, any priorities and constraints
- **Review options** (technology and supplier) for getting superfast coverage to these areas – these currently include:

- Extension of BT rollout
- Extension of Gigaclear programme
- New procurement
- Community projects



- **Identify funding** for further rollout. Potential sources include:



- 'Success dividend' resulting from high take-up of current deployment
- Project efficiency savings from Phase 1
- BDUK grant
- Contribution from district or unitary councils
- Community funds???

# Satellite – An introduction

Mark Wynn, Managing Director, Avonline Plc



# Next Generation Satellite Broadband





# Avonline plc

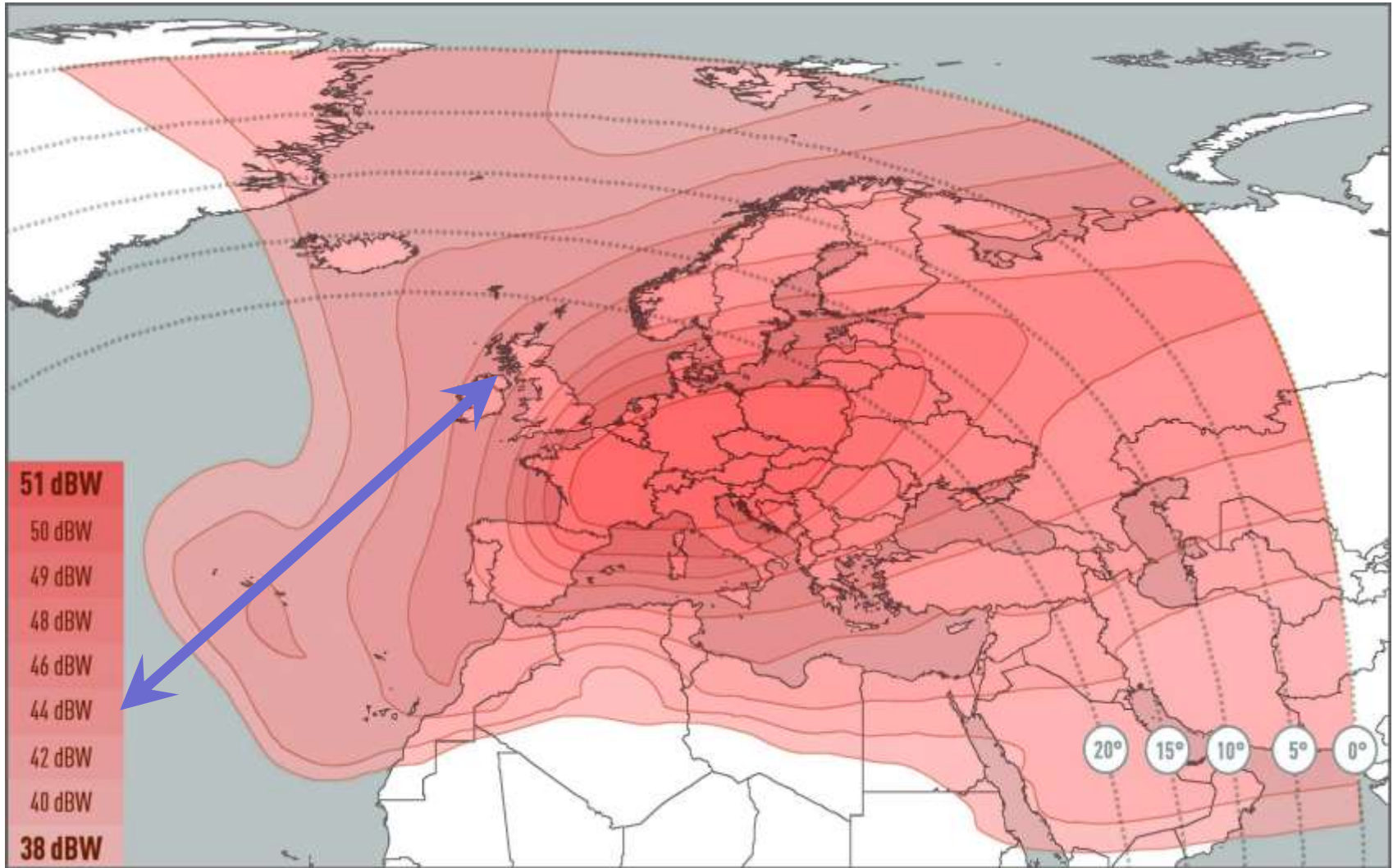
Est.  
1989  
Bristol

£500m  
Network  
Projects  
2m homes  
fibred &  
4m installs

ISO  
9001  
14001  
18001

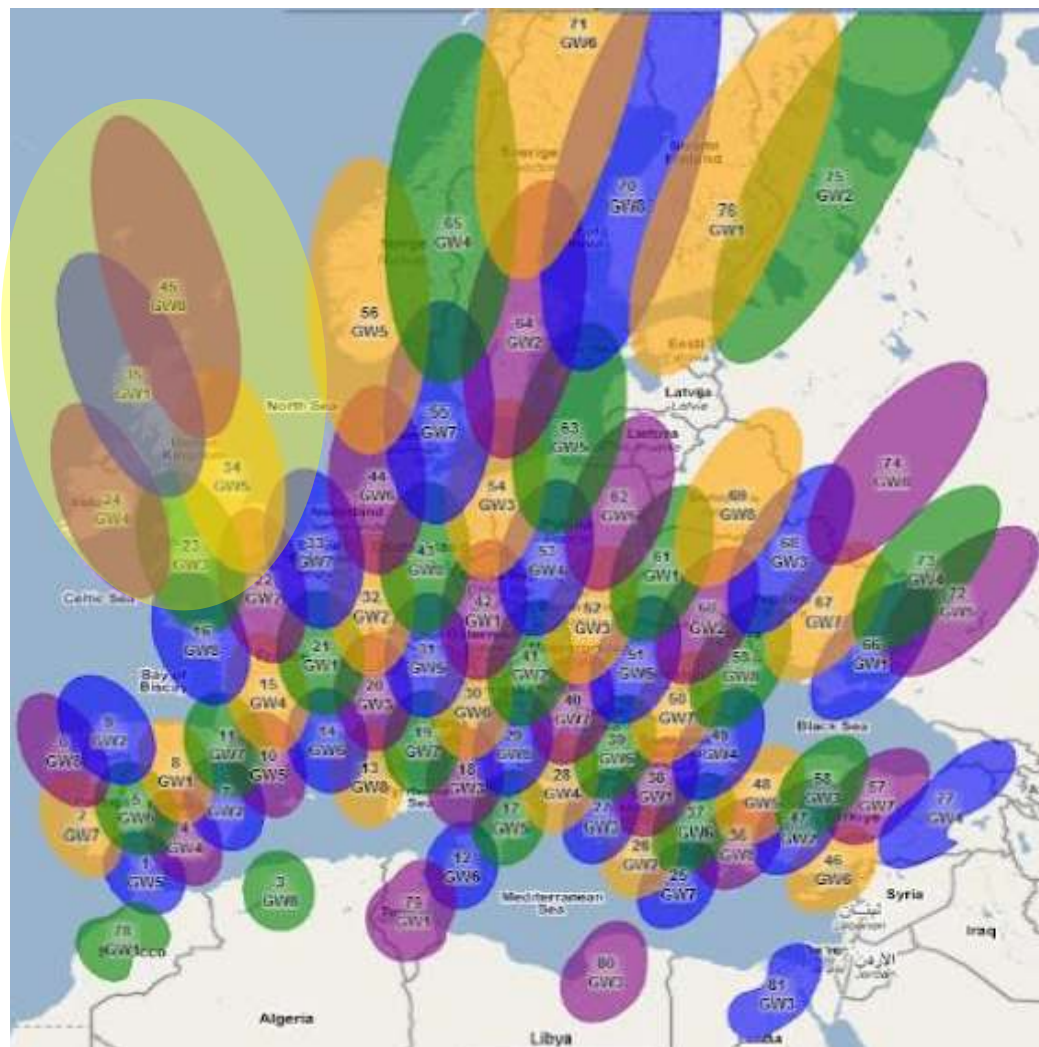
Satellite  
Broadband  
since 2002  
No.1 in UK

# How satellite broadband works – old



# How satellite broadband works – new

- **Ka spectrum**
- **Spot-beam**
- **High capacity**
- **High power**
- **High speed**
- **Higher data**
- **Resilient**
- **Simple install**







# Avonline Satellite Broadband A Farmer's story

[https://www.youtube.com/watch?v=FTxp\\_KXyilg](https://www.youtube.com/watch?v=FTxp_KXyilg)

**\$1billion  
private  
investment**

**minimum  
order qty ?**

**1**

**100% UK  
coverage  
today**

**benefits  
of Ka  
satellite**

**lowest  
cost, last  
mile option**

**immediate  
solution for  
final 1%**

# Satellite Broadband – Consumer Voucher deal

- Speed ? *to 22Mbps down & 6Mbps up*
- Upfront Costs ? *£40 installed (mainland UK)*
- Monthly Costs ? *from £29.95 per month*
- Monthly Data ? *10GB entry level package*
- Contract length ? *12 month minimum rental contract*
- Qualification ? *Council certified <2Mbps/no*

# Alternatives to the Voucher scheme

***“What if I’m potentially programmed but not for another 12-18 months”***

***“What if I’m receiving 2.5Mbps (& slowing)?”***

- Avonline has current monthly rental packages offering identical services which mirror the pricing of the Voucher scheme.
- No qualifying criteria
- Open to all and usually installed in about a week





# Got a question?



Q&A to be chaired by David Wilde, CIO and Executive Director for Place Operations (ECC). Panel to include:

- **Connie Kerbst** – Superfast Essex Programme Manager (ECC)
- **Giles Ellerton** – Regional Partnership Director for the East of England (BT)
- **Tony Smith** – Superfast Essex Senior Project Manager (Openreach)
- **Tony Heath** – Project Manager (Gigaclear Plc)
- **Mark Wynn** – Managing Director (Avonline Plc)